

# Hub De-peaking: AA at DFW, UA at ORD and CO at IAH

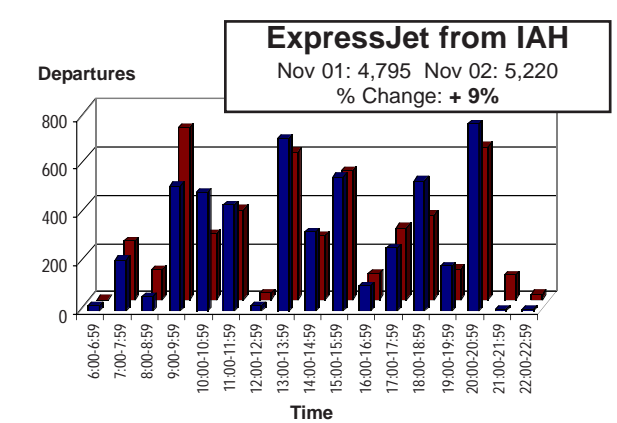
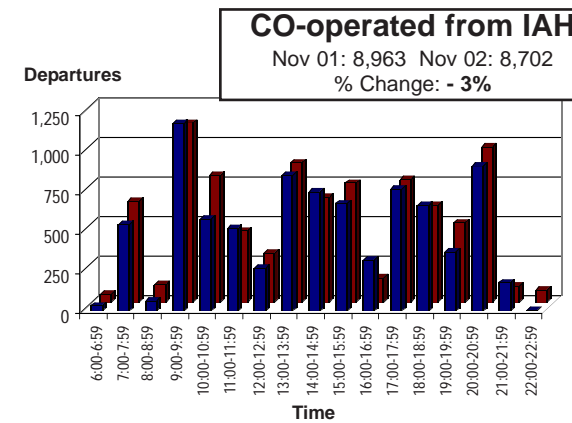
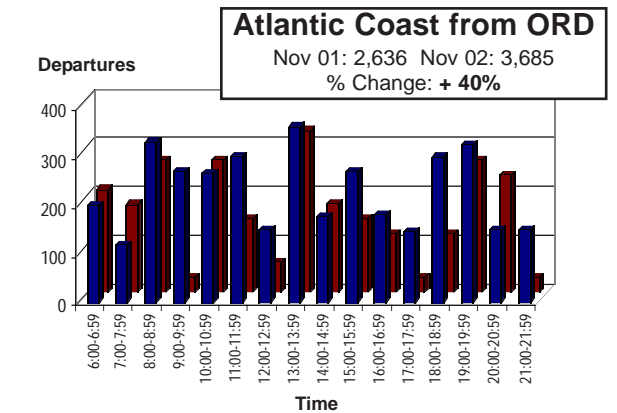
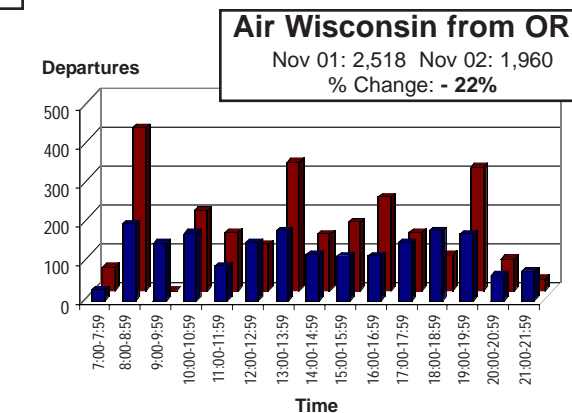
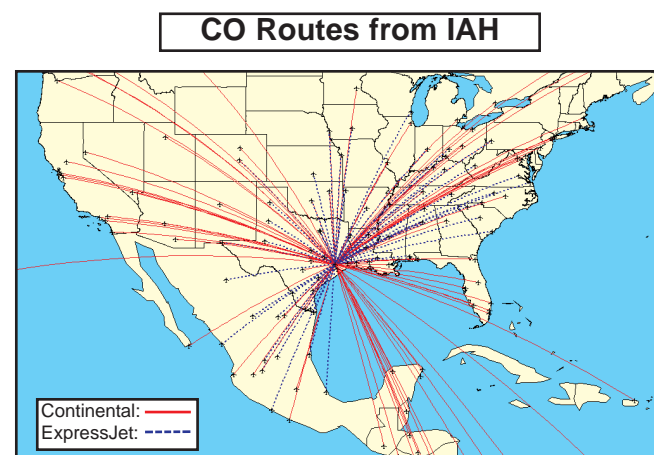
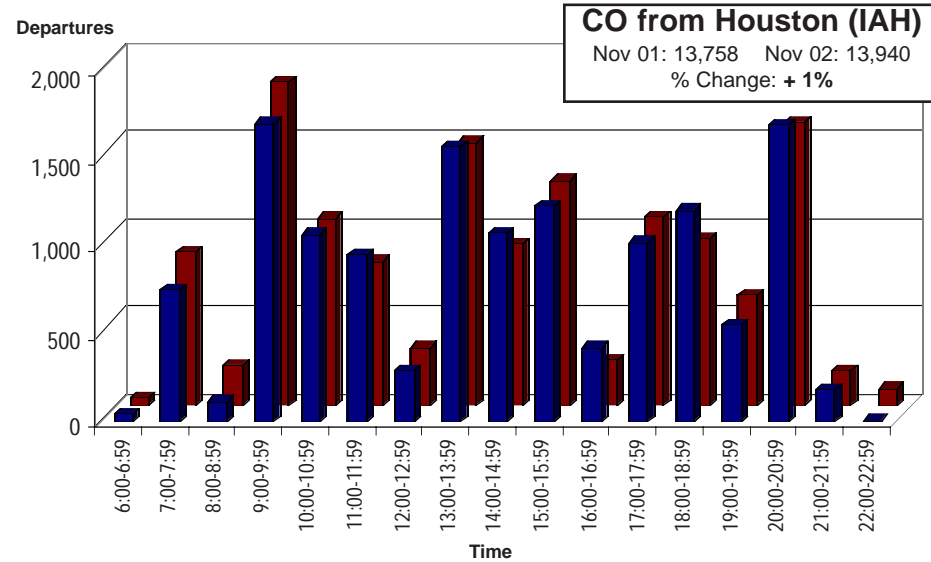
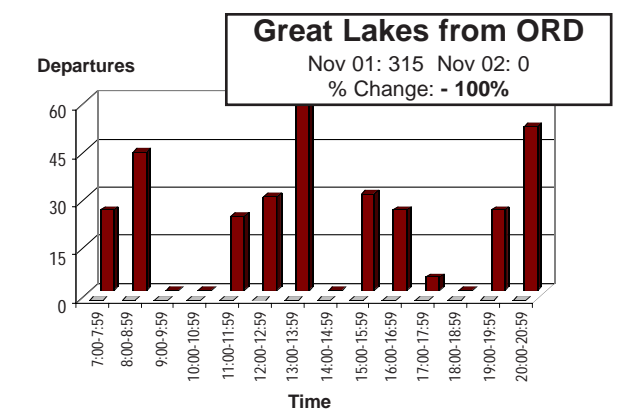
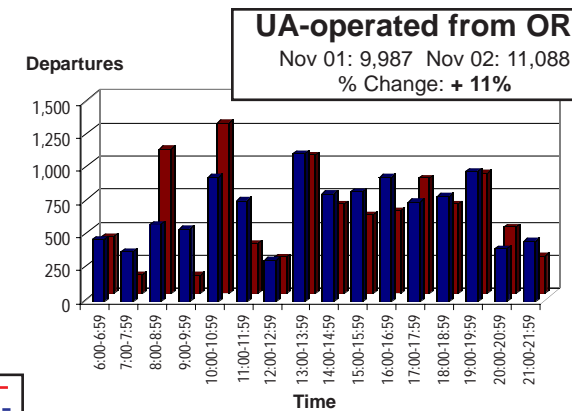
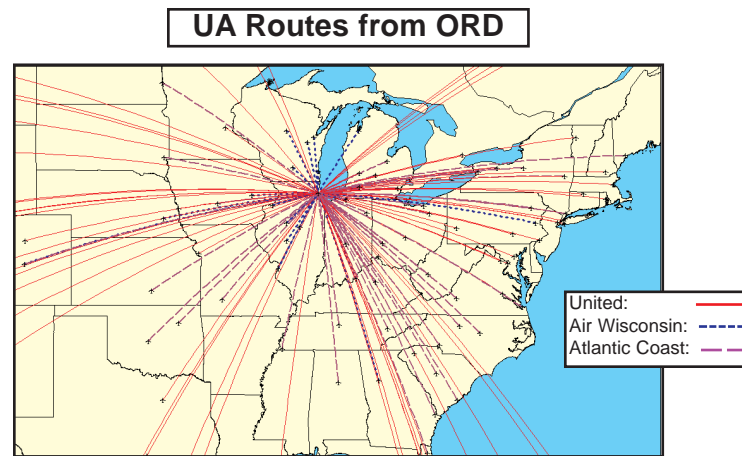
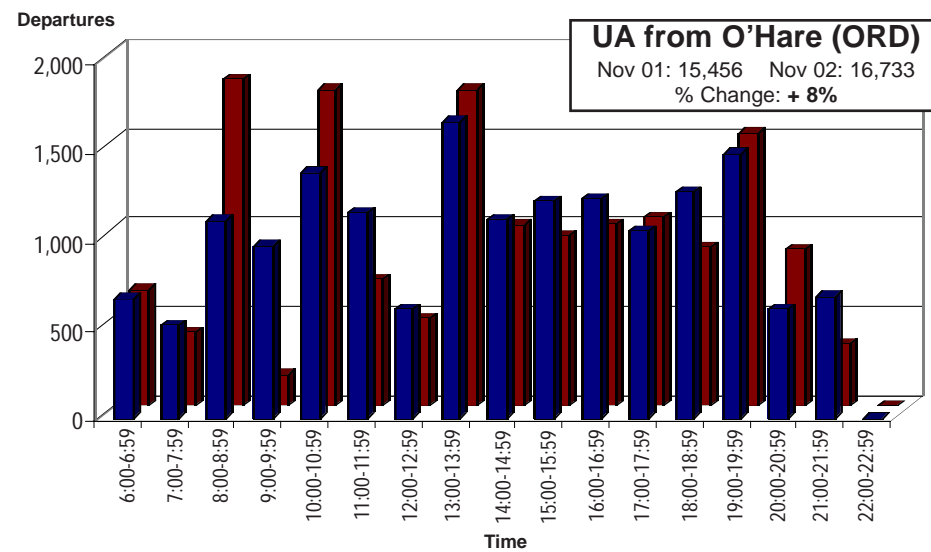
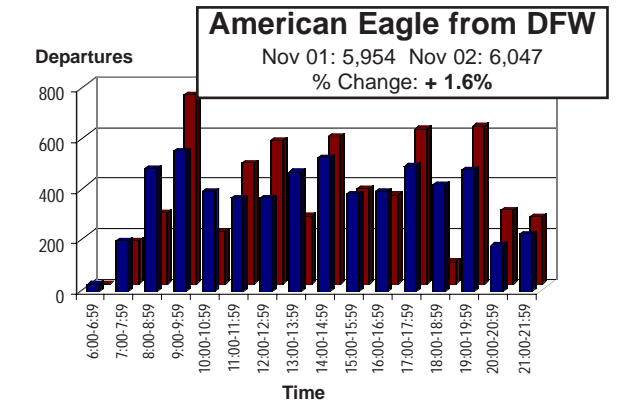
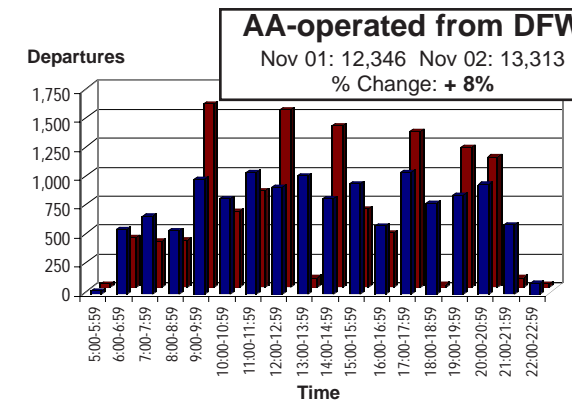
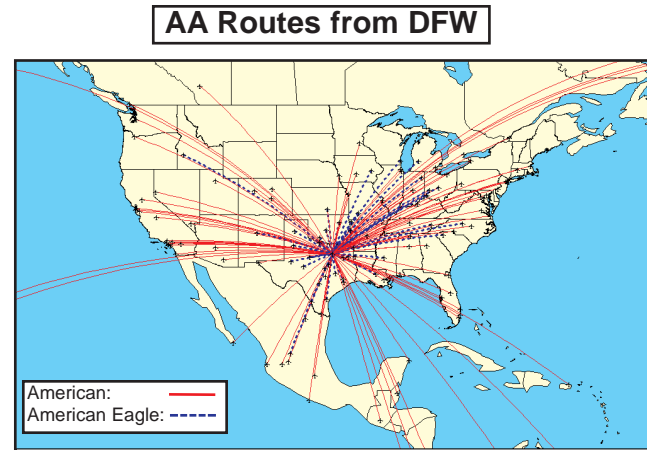
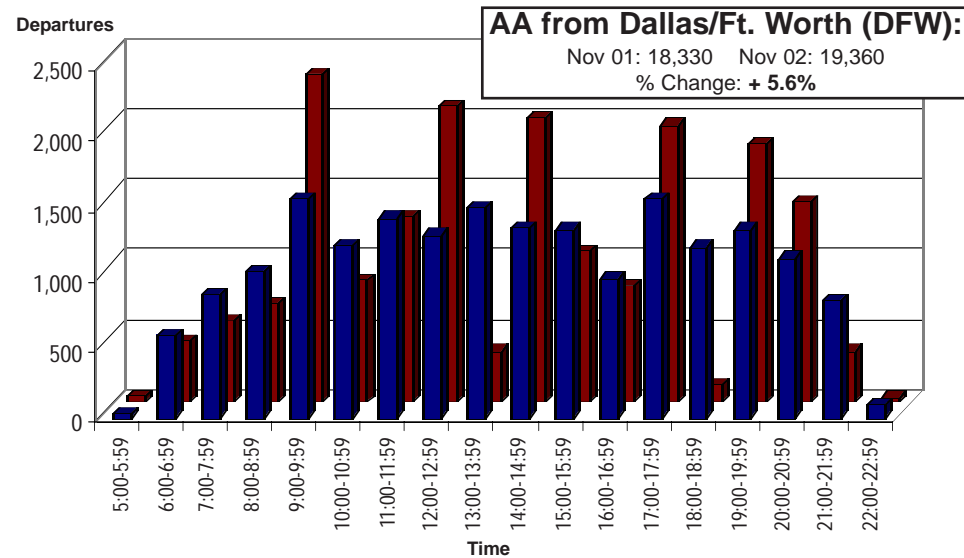
Nov 01

Nov 02

Total Published Hourly Departures: Nov 2001 vs Nov 2002

Code Share Operator Route Systems: Nov 2002

Hourly Code Share Departures: Nov 2001 vs Nov 2002



All data sourced during November 2002 by:

**back Aviation Solutions**  
www.backaviation.com